



Connecting
Hackney and
Tower Hamlets
Schools



**Centre for
Educational Leadership**

Early Career Teacher Programme

September 2026 – July 2027 - **Cohort 6 Year 1 ECTs**

Tower Hamlets Education Partnership - Y1

Facilitated Learning Events	Day	Duration (hours)	Date	Time	Venue
Module 1: ECT Welcome Conference and Facilitated Learning 1	Thursday	3	24/09/2026	13:30 - 16:30	Bigland Green Primary School
Module 2: Facilitated Learning 2 + LLC 1	Thursday	3	19/11/2026	13:30 - 16:30	Bigland Green Primary School
Module 3: Facilitated Learning 3 +LLC 2	Thursday	3	21/01/2027	13:30 - 16:30	Bigland Green Primary School,
Module 4: Facilitated Learning 4 +LLC 3	Thursday	3	04/03/2027	13:30 - 16:30	Bigland Green Primary School,
Module 5 (Facilitated Learning 5 + LLC 4)	Thursday	3	22/04/2027	13:30 - 16:30	Bigland Green Primary School,

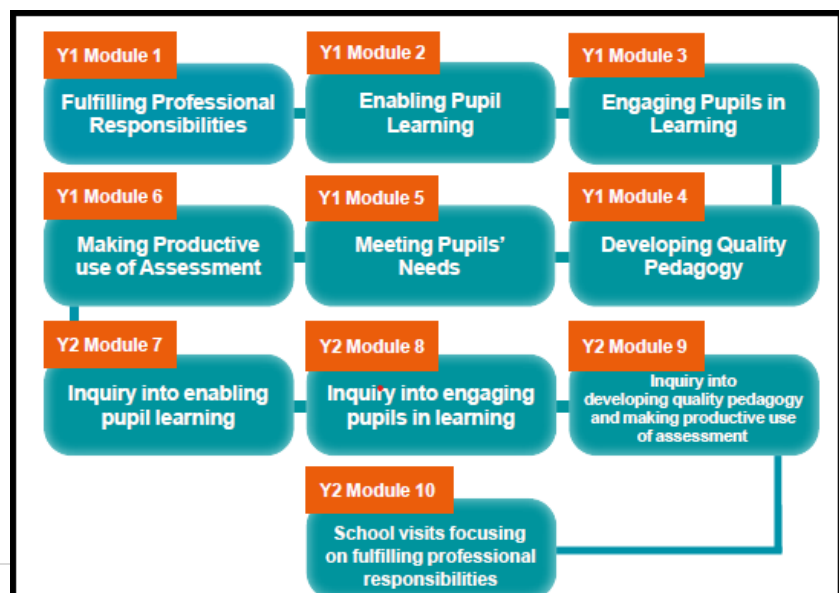
Module 6 Facilitated Learning 6 + LLC 5	Thursday	3	17/06/2027	13:30 - 16:30	Bigland Green Primary School,
Final: LLC 6	Thursday	1	08/07/2027	13:30 – 14:30	Bigland Green Primary School,

Venue address: Bigland Green Primary School, Bigland Street, London E1 2NJ

Facilitated Learning Events:

- Bring teachers together from different settings to foster new professional networks.
- Allow participants to review their learning from new perspectives.
- Are led by facilitators with expert local knowledge.
- Offer flexibility – if you are unable to attend we can direct you to an alternative.

Curriculum Overview: The **first year** comprises six modules designed to reinforce core teaching principles and practices first met in your ITE. It focuses on professional responsibilities, effective classroom practice, and understanding pupils' learning needs.



Follow East London Teaching School Hub on LinkedIn to stay connected with teachers and school leaders across East London.

We share the latest CPD opportunities, programme events, and resources that support high-quality teaching and leadership.



Connecting
Hackney and
Tower Hamlets
Schools



Early Career Teacher Programme

September 2026- July 2027 - **Cohort 5 Year 2 ECTs**

ECTs should attend the facilitated learning event on the dates, as listed below. **Please note the Year 2 Welcome Conference will take place after October half-term this year.**

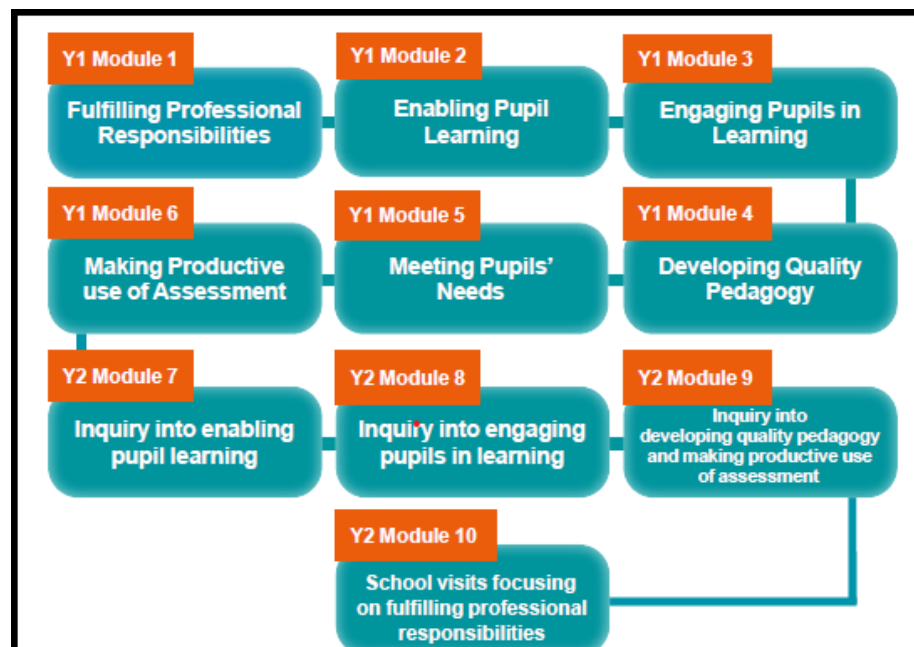
Tower Hamlets Education Partnership -Y2

Facilitated Learning Events	Day	Duration (hours)	Date	Time	Venue
Module 7 (Refining a focus)	Thursday	2	17/09/2026	13:30 - 15:30	Bigland Green Primary School
Module 8 (Welcome Conference) after Oct 1/2 term break)	Thursday	2	12/11/2026	13:30 - 15:30	Bigland Green Primary School
Module 9a (Evaluative inquiry)	Thursday	2	07/01/2027	13:30 - 15:30	Bigland Green Primary School

Module 9b (Understanding data)	Thursday	2	25/02/2027	13:30 - 15:30	Bigland Green Primary School
Module 9c (Mobilisation) and Celebration	Thursday	2	20/05/2027	13:30 - 15:30	Bigland Green Primary School
ECT School Visits	Half-term 6	n/a	June 2026	July 2027	School Visits

Venue address: Bigland Green Primary School, Bigland Street, London E1 2NJ

Curriculum Overview: In **Year 2** our ECTs deepen their knowledge through a practitioner inquiry. They revisit, personalise and extend their learning by creating their own questions and conducting investigations in their own classrooms. This approach equips teachers to continue learning through their careers.



Follow East London Teaching School Hub on LinkedIn to stay connected with teachers and school leaders across East London.

We share the latest CPD opportunities, programme events, and resources that support high-quality teaching and leadership.